

Weekly Derivatives Synopsis

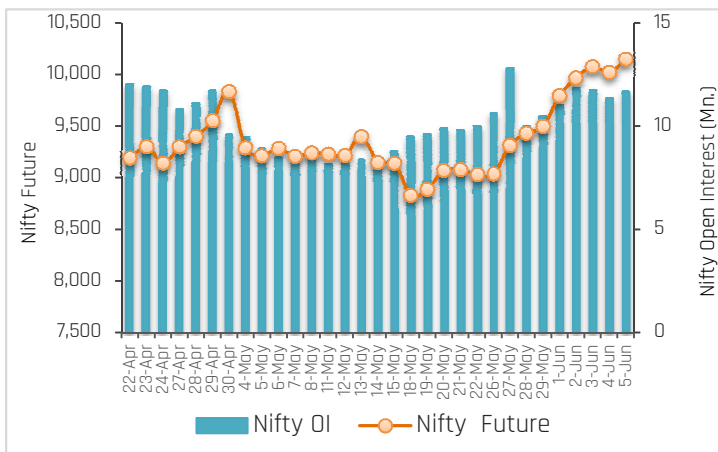
08-06-2020

PARTICULARS	Last Closing	Previous Week	% Change
NIFTY SPOT	10142	9580	5.86
NIFTY FUTURES	10146	9494	6.86
BANKNIFTY SPOT	21035	19297	9.00
BANKNIFTY FUTURES	21016	19099	10.04
NIFTY PCR	1.50	1.61	-6.83
NIFTY PCR-VOL	0.94	0.79	18.99
NIFTY OI(In Mn)	11.66	10.46	11.47
BANKNIFTY OI(In Mn)	1.56	1.54	1.30
INDIA VIX	28.68	30.22	-5.10
NIFTY BASIS POINTS	3.35	-86.20	89.55 Points

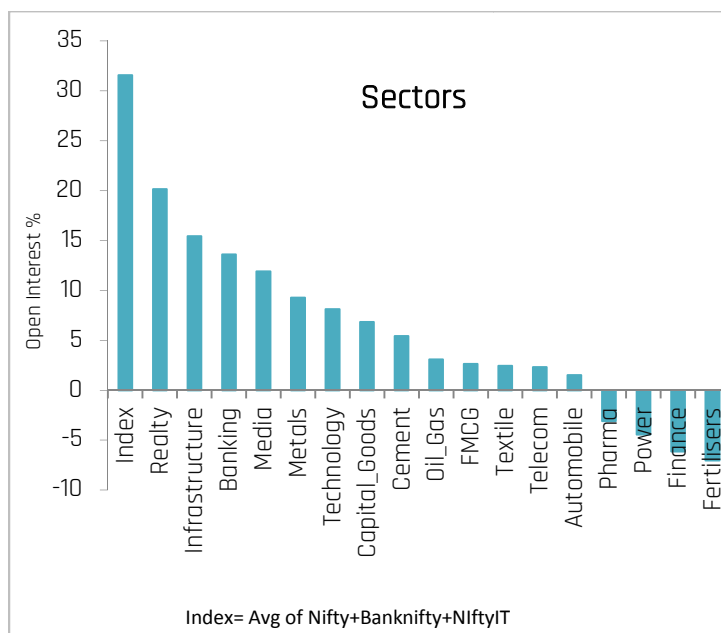
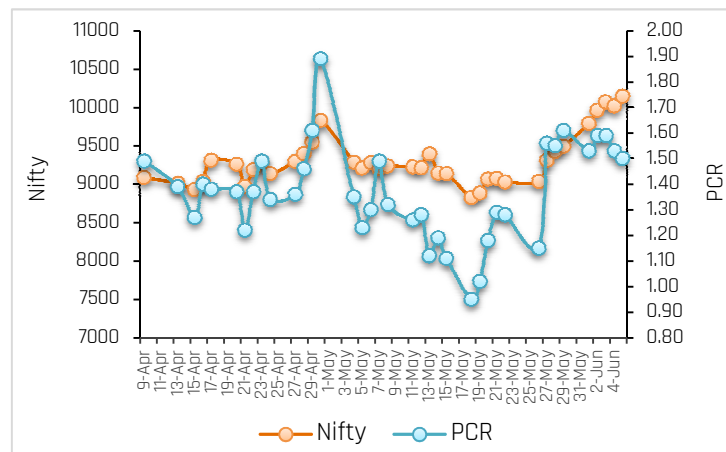
Index Outlook

Bulls continue to shine on Dalal Street during the week and strong rally has been seen across all the sectors due to positive cues from global markets, Fiis buying, normal monsoon expectations, and easing in lockdown by government. Finally, the Nifty futures settled on positive note at 10146, up 6.86% (WoW) with addition in open interest of 11.47% (WoW) indicating positive bias for short term. The India VIX cool off by 5.10% and closed at 28.68% during the week, which indicating low volatility going ahead. Nifty Put call ratio currently stands at 1.50, down 6.83% (WoW). Technically, the index has witnessed a breakout of a cup and handle pattern around 8900 levels and registered high of 10178. 200 Weekly SMA is placed close to 10352 and 50 WEMA is placed close to 10657 levels which will act as a resistance zone for the short term. Nifty index has rallied more than 1100 points in the last two weeks so oscillators on a daily scale are placed near the overbought zone, hence one requires adopting a cautious and hedged approach moving forward. On the downside, 10000 and 9850 will act as support points and on upside 10350 and 10650 will act as resistance. Going forward, count of coronavirus cases, monsoon update, Rupee movement against the Dollar, macroeconomic data, Fiis flow, Q4FY20 earnings, global cues, and crude oil price movement will dictate the trend on the bourses next week.

Nifty OI Trend



Nifty FutVsPcr



Sectoral Activity

- Last week, **Realty, Infrastructure, Media, Metals, and Technology**, stocks saw Open Interest addition. Top names included **GODREJPROP, NCC, GMRINFRA, SUNTV, PVR, NATIONALUM, JINDALSTEL, MINDTREE** and **NIITTECH**.
- Fertilisers, Finance and Power** sector saw Open Interest unwinding on the back of short covering in the stocks.
- In the **Banking** space, **CANBK, PNB, RBLBANK, BANKBARODA, ICICIBANK, AXISBANK, HDFCBANK**, and **SBIN** saw long build-up while short covering seen in **BANDHANBK**.
- This week, some buying can be seen in **MINDTREE, CONCOR, SBILIFE, CUMMINSIND, and HDFCBANK**, while selling pressure can be seen in **NAUKRI and MCDOWELL-N**.
- From sector space, **Banking, Fertilisers, Technology, Finance, Infrastructure, and Cement**, stocks are likely to remain in focus in the forthcoming week.

08-06-2020

Stocks to Watch Out (Weekly)

Long Build-up			
Symbol	Price	OI Change	Price Change
MINDTREE	921.50	67%	3%
UBL	1,020.10	49%	7%
CANBK	104.65	49%	26%
GODREJPROP	806.65	47%	18%

Long Unwinding			
Symbol	Price	OI Change	Price Change
NAUKRI	2,505.45	-7%	-4%
ASIANPAINT	1,641.45	-4%	-1%

Short Build-up			
Symbol	Price	OI Change	Price Change
HDFCLIFE	515.35	19%	-1%
MFSL	474.20	11%	-1%
MARICO	327.30	2%	-3%
NESTLEIND	17,058.95	1%	-2%

Short covering			
Symbol	Price	OI Change	Price Change
MUTHOOTFIN	918.25	-40%	7%
ADANIPOWER	39.05	-39%	7%
BATAINDIA	1,416.70	-30%	7%
UJJIVAN	185.15	-24%	9%

Weekly Recommendation

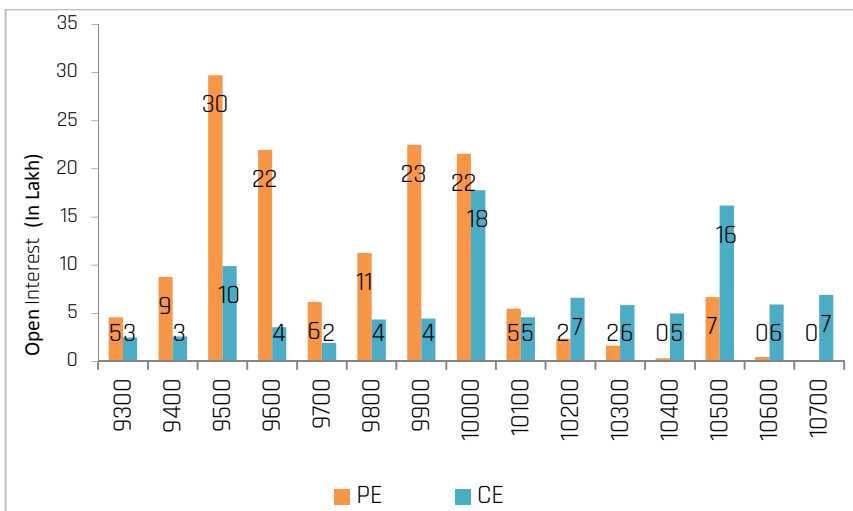
MINDTREE (921.50) -The stock has seen Open Interest addition of 67.34% along with positive price action indicating long build-up. The stock can be bought in the range of 900-910 with a stop loss of 860 on closing basis for a target of 960-980.

Target: 980 Stop Loss: 860

CONCOR (403.70) - The stock has seen Open Interest addition of 25.21% along with positive price action indicating long build-up. The stock can be bought in the range of 395-400 with a stop loss of 380 on closing basis for a target of 440.

Target: 440 Stop Loss: 380

Nifty Options Snapshot



From the OI Concentration (25-June Series), addition of open interest on the call options front exists at the strike prices of 10000 and 10500 (with nearly 17.80 lacs and 16.18 lacs shares outstanding). This indicates that 10500 level would act as the resistance zone on the upside. On the Put options front, addition of open interest is at the strike prices of 9900 and 9500 (with nearly 20.50 lacs and 29.70 lacs shares outstanding respectively), indicating 9000 stronger support zone on the downside.

Weekly Derivatives Synopsis

08-06-2020

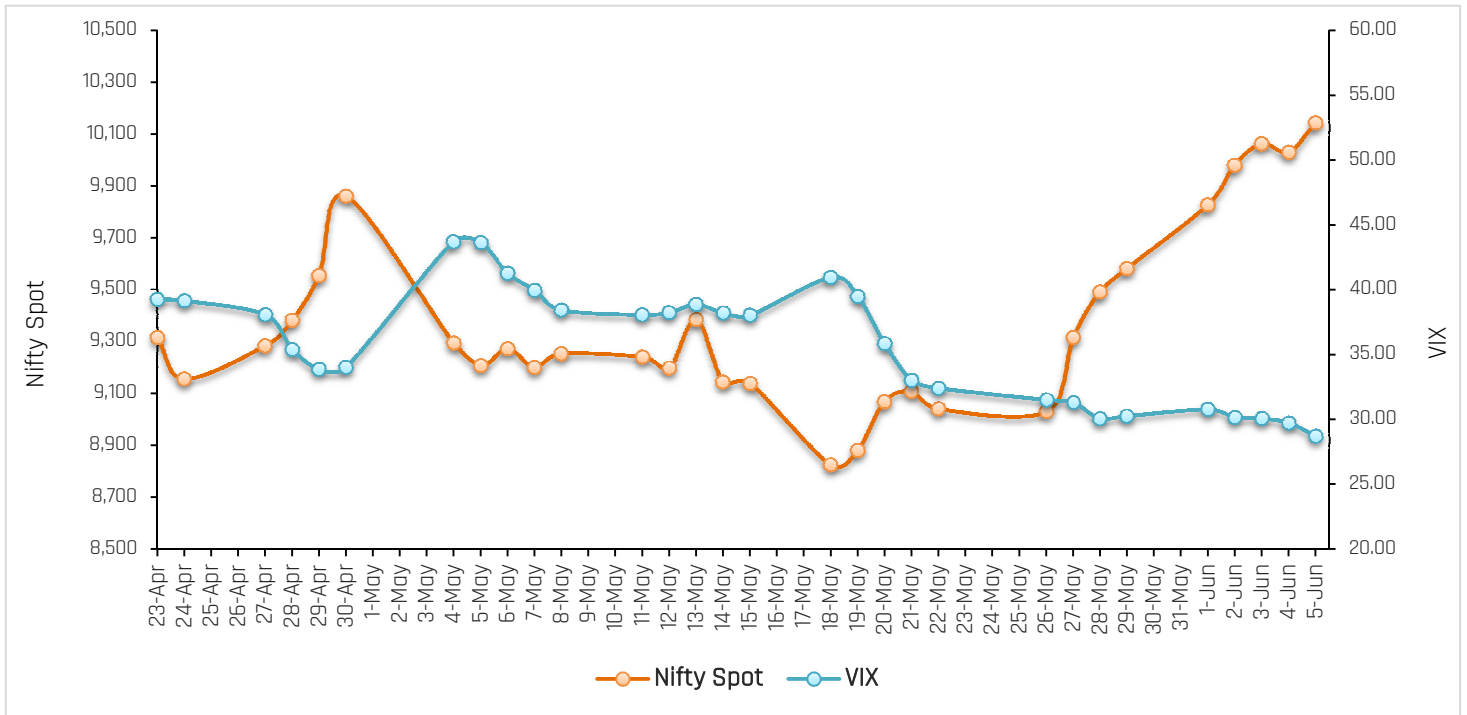
FII Stats (5 Days Trend)

(Rs. Cr.)	05-Jun	04-Jun	03-Jun	02-Jun	01-Jun
INDEX FUTURES	-345	-1266	532	357	136
INDEX OPTIONS	662	1228	-161	483	-226
STOCK FUTURES	455	722	1636	-484	-351
STOCK OPTIONS	27	29	-24	-8	-140

FII Open Interest Activity (Long & Short Ratio)

Date	Index Fut: Long/Short	Index Option: Long /Short	Index put: long /Short	Stock Fut Long/Short
29-May	1.50	1.58	1.61	2.17
1-Jun	1.40	1.41	1.60	2.14
2-Jun	1.51	1.51	1.53	2.10
3-Jun	1.68	1.46	1.44	2.22
4-Jun	1.32	1.53	1.61	2.25
5-Jun	1.18	1.50	1.50	2.32

NIFTY VS INDIA VIX (Last 30 Days Trend)



Observation: Any rise in India Vix this week would lead to either side movement in the Index. As per the above chart, India Vix has strong support at around 25.00 and resistance stands at 35.00.

Weekly Advance Decline Ratio (Nifty Stocks)

Advances	46
Declines	02
Unchanged	02

ACMIIL Retail Research Products

Informational Products	Recommendation Products
Morning Notes	Momentum calls
Equi-Tea	Smart Delivery trades
Market Watch	Positional technical calls
Investor First	Investment ideas
Preview	Master trades High & Medium Risk
Market Pulse	Techno Funda
RBI Monetary Policy	Equity SIP
Budget Report	Mutual fund model portfolios
Weekly Derivatives Synopsis	Portfolio Doctor
Rollover Snapshot	
Rollover Analysis (Monthly)	

For More Information on Retail Research Products please visit
<http://www.investmentz.com/research-report/>

Asit C. Mehta

INVESTMENT INTERMEDIATES LTD.

Retail Research Desk:

Email: retailresearch@acm.co.in

Research Analyst Registration Number:

INH000002483

CIN: U65990MH1993PLC075388

An ISO 9001:2015 Certified Company

Follow us on:



Information pertaining to Asit C. Mehta Investment Intermediates Limited (ACMIIL):

ACMIIL is a SEBI registered Stock Broker, Merchant Banker, Portfolio Manager and Depository Participant. It is also a AMFI registered Mutual Fund Distributor. It does not have any disciplinary history. Its associate/group companies are Asit C. Mehta Commodity Services Limited, Asit C. Mehta Realty Services Pvt. Ltd, Asit C. Mehta Forex Pvt. Ltd, Nucleus IT Enabled Services , Asit C. Mehta Financial Services Limited (all providing services other than stock broking,merchant banking and portfolio management services.).

Disclosures

ACMIIL/its associates and its Research analysts have no financial interest in the companies covered on the report. ACMIIL/its associates and Research analysts did not have actual/beneficial ownership of one per cent or more in the companies being covered at the end of month immediately preceding the date of publication of the research report. ACMIIL/its associates or Research analysts have no material conflict of interest, have not received any compensation/benefits for any reason (including investment banking/ merchant banking or brokerage services) from either the companies concerned/third parties with respect to the companies covered in the past 12 months. ACMIIL/its associates and research analysts have neither managed or co-managed any public offering of securities of the companies covered nor engaged in market making activity for the companies being covered. Further, the companies covered neither are/nor were a client during the 12 months preceding the date of the research report. Further, the Research analyst/s covering the companies covered herein have not served as an officer/director or employee of the companies being covered

Disclaimer:

This report is based on information that we consider reliable, but we do not represent that it is accurate or complete and it should not be relied upon such. ACMIIL or any of its affiliates or employees shall not be in any way responsible for any loss or damage that may arise to any person from any inadvertent error in the information contained in the report. To enhance transparency we have incorporated a Disclosure of Interest Statement in this document. This should however not be treated as endorsement of the views expressed in the report.

You are also requested to refer to the disclaimer (which is deemed to be part and parcel and is applicable to this research report as well) : <http://www.investmentz.com/disclaimer>