

CORPORATE AND ECONOMY NEWS

- Bharat Electronics:** The company received a contract worth Rs 3,172 crore from Vehicles Nigam to supply sighting and fire control systems for Indian Army tanks and received additional orders worth Rs 481 crore for meteorological equipment.
- Vodafone Idea:** The telco joined its peers Reliance Jio and Bharti Airtel to raise rates for prepaid and post-paid consumers by 10–21%. The new plans will come into effect on July 4.
- Cochin Shipyard:** The company's unit signed a pact with Norway's Wilson ASA for constructing four 6,300 TDW dry cargo vessels and an agreement for four additional vessels to be formally contracted by Sept. 19, 2024. The overall project cost for eight vessels is about Rs 1,100 crore.
- UltraTech Cement:** The company commissioned an additional 3.35 MTPA clinker and 1.8 MTPA grinding capacity at its Tadipatri unit in Andhra Pradesh. This increased the capacity of the grinding unit in Jharsuguda, Odisha, by 0.4 MTPA.
- Jindal Stainless:** The company acquired a 100% stake in Sulawesi Nickel Processing Industries Holdings PTE, Singapore, for setting up a joint venture in Indonesia for investing, developing, constructing, and operating a stainless-steel melt shop in Indonesia.
- Tata Steel:** The company converted its debt holding of \$565 million in unit T Steel Holdings into equity.
- Titan:** The company formed a 76-24 JV with Rhythm Jewellery in Bangladesh for manufacturing jewellery products.
- TVS Motor:** The company acquired an additional stake in TVS Credit Services for Rs 283 crore.
- Dr. Reddy's Laboratories:** The company partnered with Zydus Life for co-marketing of the Pertuzumab biosimilar.
- Orchid Pharma:** The company partnered with Cipla to launch the antibiotic Cefepime-Enmetazobactam in India.
- Godrej Properties:** The company acquired leasehold rights for an 11-acre land parcel in Pune, offering a developable potential of 2.2 million square feet with an estimated revenue potential of Rs 1,800 crore.
- eMudhra:** The company acquired 100% of US-based TWO95 International Inc. through its wholly owned subsidiary eMudhra Inc., USA, to strengthen the company's presence and positioning in the US market.
- Coromandel International:** The company unveiled Magnesium-Enriched Paramfos Plus in Bengaluru to boost crop yield and quality.
- GAIL (India):** The company's advances its net-zero target for Scope-1 and Scope-2 greenhouses gas emissions to 2035.
- JSW Energy:** JSW Neo Energy, a wholly-owned subsidiary of the company, has received a letter of award for wind-solar hybrid power projects of 300 MW from SJVN, for setting up of 1,500 MW ISTS connected wind-solar hybrid power projects (Hybrid-2).
- Zydus Lifesciences-** The company has entered into a licensing agreement with Dr Reddy's Laboratories for co-marketing Pertuzumab biosimilar in India. Pertuzumab is a critical treatment for HER2 positive breast cancer patients.

MARKET SCAN

INDIAN INDICES

Index	Clsg	Chg
BSE Sensex	79032	-0.27%
Nifty	24011	-0.14%
Banknifty	52342	-0.89%
Inida Vix	13.80	-2.47%

GLOBAL INDICES

DJIA	39118	-0.12%
Nasdaq	17733	-0.71%
FTSE	8164	-0.19%
CAC	7479	-0.68%
DAX	18235	0.14%
Nikkei	39660	0.20%
Hang Seng	17719	0.01%

SECTOR INDEX (NSE)

IT	36158	0.09%
Infra	9134	0.30%
Energy	41789	1.08%
FMCG	56757	0.15%
Pharma	19732	1.11%
Auto	25201	0.04%
Metals	9814	0.48%
Midcap	55737	0.56%
Nifty 500	22560	0.10%

DII/FII INVESTMENT (IN.CR.)

DII	6,658
FII/FPI	-23

Top Open Interest Gainers

Symbol	Curr %	3M Avg
POLYCAB	87.39%	-3.61%
GNFC	79.11%	5.25%
INDIACEM	72.66%	1.65%
PNB	29.76%	2.82%

Top Open Interest Losers

TATAMOTORS	-6.92%	1.82%
GRASIM	-4.60%	1.23%
INDIAMART	-4.45%	1.38%
RELIANCE	-4.41%	2.60%

FOREX MARKET

USDINR	83.38	0.01%
EURINR	89.24	-0.08%

COMMODITY MARKET

Gold (\$/OZ)	2335.75	-0.16%
Silver(\$/OZ)	29.37	-0.65%
Brent (\$/Bbl)	85.37	0.44%
Copper(\$/Lbs)	4.37	-0.14%

Source: Bloombergquint, Economic Times, Business Standard, Business Line, Times of India, Mint, Indian Express, Business Today, Indian Express, Money Control, in.investing, Cnbctv18.

Source: in.investing.com; As on 8:10 am IST

GLOBAL MARKETS

Global Market Update

Global stock indexes edged lower on Friday, reversing early gains, while Treasury yields rose and the U.S. dollar declined as investors absorbed data that showed U.S. monthly inflation was unchanged in May. The Dow Jones Industrial Average fell 45.20 points, or 0.12%, to 39,118.86, the S&P 500 lost 22.39 points, or 0.41%, to 5,460.48 and the Nasdaq Composite lost 126.08 points, or 0.71%, to 17,732.60.

Crude Oil

Oil prices edged up in early trade on Monday, supported by forecasts of a supply deficit stemming from peak summer fuel consumption and OPEC+ cuts in the third quarter, although global economic headwinds and rising non-OPEC+ output capped gains.

Gift Nifty

The GIFT Nifty is trading flat, indicating a muted start for the day. Nifty futures were trading at 24135.5 at 07:00 am IST.

TECHNICAL CHART



TECHNICAL VIEW

Nifty Outlook:

The domestic benchmark indices opened on a positive note in line with global cues. As a result, Nifty registered a fresh record high of 24,174 and witnessed profit booking. Finally, the index settled the day on a negative note at 24,011 levels. Technically, the index has found resistance near the 24,200 levels, and failed to close above the trend line resistance. If the index sustains above 24,200 levels, then the rally could extend towards 24,500-24,600 levels in the short term.

Bank Nifty Outlook:

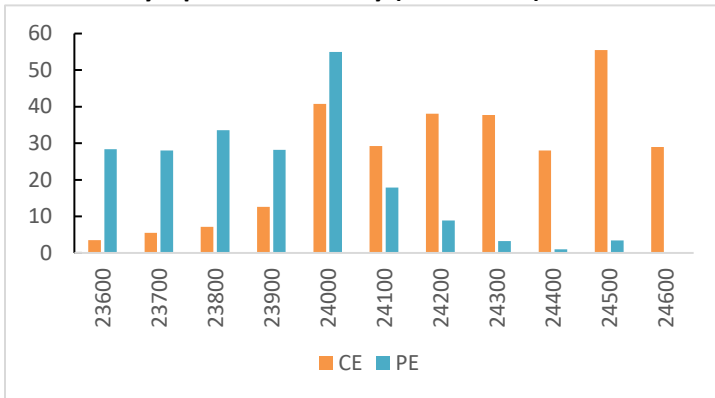
Bank Nifty opened with a gap-up but failed to sustain higher levels, resulting in profit booking. Finally, the index settled the day on a negative note at 52,342. From a technical standpoint, the index has formed a bearish candle near trend line resistance. Thus, for the short term, 53,200 will act as a hurdle for Bank Nifty. If the index sustains above the 53,200 levels, then the rally could extend towards 54,000.

DERIVATIVES INDICATORS

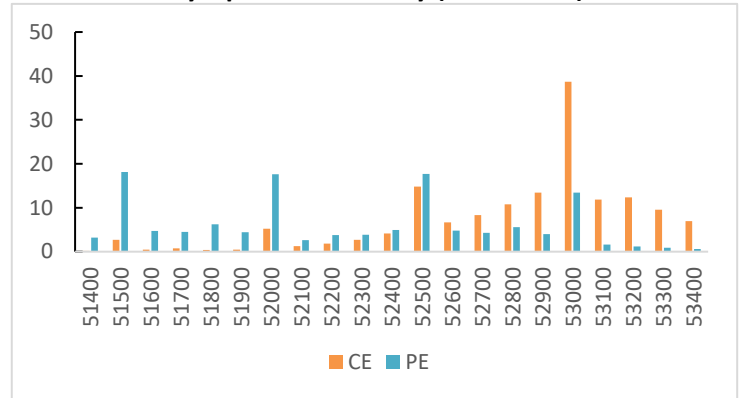
	Last Closing	Previous Day	Changes %	Out Come
NIFTY JULY FUT	24132.25	24095.85	0.15%	Neutral
NIFTY OI (Total)	15490575	15142850	2.30%	
BANKNIFTY JULY FUT	52529.70	52905.60	-0.71%	Neutral
BANKNIFTY OI (Total)	2746080	2723790	0.82%	
FINNIFTY JULY FUT	23541.40	23682.30	-0.59%	Short Buildup
FINNIFTY OI (Total)	125600	111525	12.62%	
MIDCPNIFTY JULY FUT	12239.40	12270.00	-0.25%	Neutral
MIDCPNIFTY OI (Total)	1998150	2004650	-0.32%	
NIFTY PCR - OI	1.17	1.49	-21.48%	Neutral
INDIA VIX	13.80	14.15	-2.47%	Neutral

WEEKLY OPTION'S OPEN INTEREST

Nifty Option OI - 04 July (OI in Lakhs)



BankNifty Option OI - 03 July (OI in Lakhs)



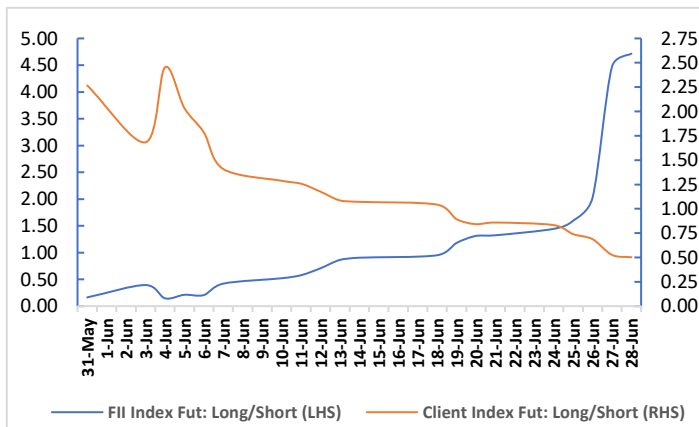
FII DERIVATIVES STATISTICS (In Cr.)

INDEX FUTURES	1711.34
INDEX OPTIONS	7903.80
STOCK FUTURES	5128.78
STOCK OPTIONS	-336.07

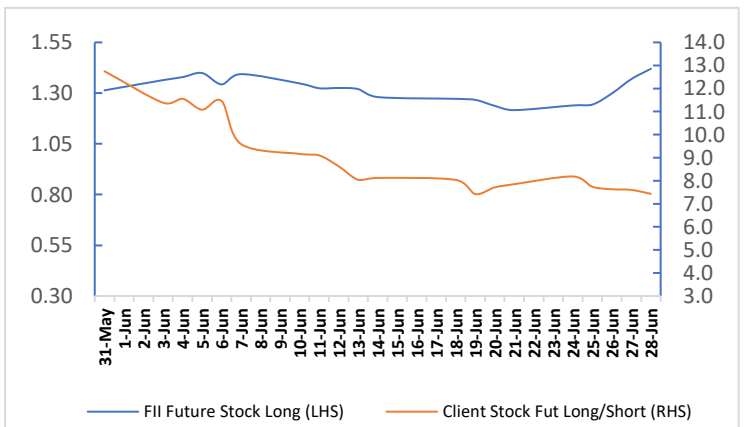
Securities in Ban For Trade Date 01-JUL-2024:

INDIACEM INDUSTOWER

Fis Vs Client Index Fut Long Short Ratio



Fiis Vs Client Stock Fut Long Short Ratio



Retail Research Technical & Fundamental Calls for the Month of June-2024

Positional Calls (For 1-3 Months)

Date	Company	Rec	Rec Price	Stop Loss	Target	Status	Net Returns%
05-Mar	TRIDENT	Accu	38.94	34.64	47.64-51.64	Open	
07-May	ITC	Accu	424.5-434.5	408.5	468-495	Open	
24-May	INDUSTOWER	Accu	312.5-352	290	450-500	Booked	14.07%
06-Jun	TATACONSUM	Accu	1080-1120	1045	1220-1280	Open	
07-Jun	TATAMOTORS	Accu	915-955	890	1020-1100	Open	
07-Jun	TATAMOTORS	Accu	915-955	890	1020-1100	Open	
19-Jun	IDFC	Accu	117.5-120.5	113	128-135	Open	
20-Jun	COALINDIA	Accu	462-474	448	500-530	Open	
20-Jun	FLUOROCHEM	Accu	3320-3420	3180	3670-3900	Open	
21-Jun	COFORGE	Accu	5280-5450	5145	5800-6000	Open	
25-Jun	HAPPSTMNDS	Accu	820-840	795	900-950	Open	
26-Jun	VBL	Accu	1525-1575	1480	1680-1780	Open	
27-Jun	BAJAJ_AUTO	Accu	9225-9425	8900	10000-10040	Open	
27-Jun	IBREALEST	Accu	142-147	135	159-170	Open	
27-Jun	INFY	Accu	1520-1560	1470	1650-1740	Open	

Investment Idea (For Long Term)

Date	Company	Rec	Rec Price	Target	Status	Net Returns%
01-Apr	AIAENG	Accu	3650-3690	4909	Open	
03-Jan	TCI	Accu	825-835	1080	Open	
24-Jan	APLAPOLLO	Accu	1495-1505	2077	Open	
29-Jan	AUTOAXLES	Accu	2120-2130	2906	Open	
23-Feb	ASTRAL	Accu	2080-2100	2627	Open	
25-Apr	CAPLIPOINT	Accu	1320-1330	1675	Open	
14-May	CIEINDIA	Accu	480-490	617	Open	
05-Jun	ITDCEM	Accu	380-390	505	Booked	31.17%
21-Jun	PGEL	Accu	3190-3230	4120	Open	

For More Information on Retail Research Products please visit <https://www.investmentz.com/research-services>

Asit C. Mehta

INVESTMENT INTERRMEDIATES LTD.

Retail Research Desk:

Devang Shah E: devang.shah@acm.co.in
 Neeraj Sharma E: neeraj.sharma@acm.co.in
 Hrishikesh Yedve E: hrishikesh.yedve@acm.co.in
 Ruchi Jain E: ruchi.jain@acm.co.in
 Kamlesh Jain E: kamlesh.jain@acm.co.in
 Email: retailresearch@acm.co.in

Research Analyst Registration Number:

INH000002483

CIN: U65990MH1993PLC075388

Download Investmentz app:



Follow us on:



Information pertaining to Asit C. Mehta Investment Intermmediates Limited (ACMIIL):

ACMIIL is a SEBI registered Stock Broker, Merchant Banker, Portfolio Manager, Research Analyst and Depository Participant. It is also a AMFI registered Mutual Fund Distributor. Its associate/group companies are Asit C. Mehta Commodity Services Limited, Nucleus IT Enabled Services, and Asit C. Mehta Financial Services Limited (all providing services other than stock broking, merchant banking and portfolio management services.).

Disclosures

ACMIIL/its associates and its Research analysts have no financial interest in the companies covered on the report. ACMIIL/its associates and Research analysts did not have actual/beneficial ownership of one per cent or more in the companies being covered at the end of month immediately preceding the date of publication of the research report. ACMIIL/its associates or Research analysts have no material conflict of interest, have not received any compensation/benefits for any reason (including investment banking/ merchant banking or brokerage services) from either the companies concerned/third parties with respect to the companies covered in the past 12 months. ACMIIL/its associates and research analysts have neither managed or co-managed any public offering of securities of the companies covered nor engaged in market making activity for the companies being covered. Further, the companies covered neither are/nor were a client during the 12 months preceding the date of the research report. Further, the Research analyst/s covering the companies covered herein have not served as an officer/director or employee of the companies being covered

Disclaimer:

This report is based on information that we consider reliable, but we do not represent that it is accurate or complete and it should not be relied upon such. ACMIIL or any of its affiliates or employees shall not be in any way responsible for any loss or damage that may arise to any person from any inadvertent error in the information contained in the report. To enhance transparency we have incorporated a Disclosure of Interest Statement in this document. This should however not be treated as endorsement of the views expressed in the report.

You are also requested to refer to the disclaimer (which is deemed to be part and parcel and is applicable to this research report as well) :<http://www.investmentz.com/disclaimer>